

Jan Munroe, Woodworks

WOODWORKS

By Jan Munroe — APRIL 8, 9, 10 & 15, 16, 17 AT 8 PM
 A MOVEMENT-BASED PIECE WITH IMAGES AND TEXT DERIVED FROM HIS EXPERIENCE AS A CARPENTER. PERFORMED BY A COMPANY OF ACTORS AND DANCERS WITH ORIGINAL MUSIC BY STEVE MOSHIER. TICKETS: \$10/\$8 LACE MEMBERS. WOODWORKS IS PRESENTED IN ASSOCIATION WITH THE MODERN ARTISTS COMPANY AND NATIONAL/STATE/COUNTY PARTNERSHIP.

TRACKING THE EPIDEMIC

April 17 - June 19; Tracking the Epidemic: 5 years with The Gay Men's Health Crisis (N.Y. AIDS care organization), Exhibition of graphics curated by writer Jan Grover in the LACE Bookstore April 17 from 2-5 pm; Author's Party: Simon Watney, London-based author of Policing Desire, Pornography, AIDS and the Media. Both writers discuss their work including their articles in October magazine's special issue on AIDS.

Staley, Frisell and Mori
 Joseph Paul Taylor
 April 22 at 7:30 pm; Direct from the Manhattan new music scene comes the improvising ensemble Jim Staley (trombone), Bill Frisell (guitar) and Ikue Mori (drums). Joseph Paul Taylor performs solos for electronic keyboards and voice in a musical equivalent to "living television." Tickets: \$8/\$6 LACE members.

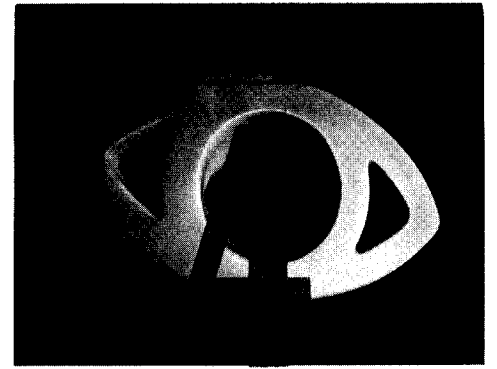
Co-presented with the Independent Composers Association and Meet the Composer.

LEROY JENKINS

April 23 at 8 pm; Violinist/composer Leroy Jenkins is one of the key shapers of "new jazz." His solo concert for unaccompanied viola and violin displays influences from urban blues, gospel and bluegrass to Stravinsky. Tickets: \$8/\$6 LACE members.

Four one-person shows April 27 - June 5; four one-person shows: Alvaro Asturias, Lee Kaplan, Pat Nickell and Ann Preston; installations and sculpture. Opening Reception: Wednesday, April 27, 7-10 pm

Ann Preston, Marble Eye



OUTSIDE LACE

April 27- June 5; OutsideLACE: a painted banner by Karen Kitchell. Opening Reception: Wednesday, April 27, 7-10 pm Continuing: Natural Culture, wall painting by Roy Dowell

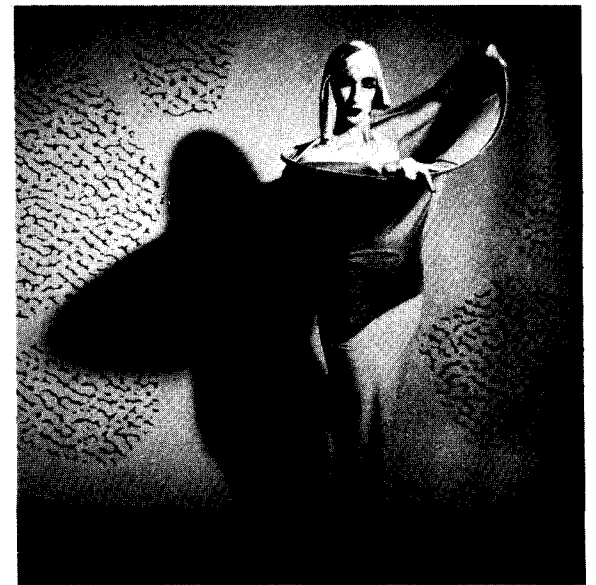
RICK HINK

April 27 - May 22, Rick Hink, Video Installation
 Rick Hink, a Los Angeles artist, transforms LACE's video screening room into an ethereal multi-monitor and speaker installation entitled, "Clarified Object." Opening Reception: Wednesday, April 27, 7-10 pm

PRIMITIVE x MOVERS AND x SYNCOPATIONS

MAY 5, 6 & 7 AT 8 PM; PRIMITIVE MOVERS AND SYNCOPATIONS
 CHOREOGRAPHER/FILMMAKER KATHY ROSE DANCES IN TIGHT SYNCHRONIZATION WITH ANIMATED FILM IMAGES. ELABORATE COSTUMES OF SWEEPING CHIFFONS AND SILKS FLY IN SLOW MOTION ON STAGE AND FILM. TICKETS: \$10/\$8 FILMFORUM AND LACE MEMBERS. A FILMFORUM* AND LACE CO-PRESENTATION.

Kathy Rose, Syncopations



Twisted Spring

May 13-15 & 27-29 at 8 pm; Twisted Spring
 First annual May Series of Los Angeles choreographers Sandra Christensen, Carol Cetrone, Tina Gerstler, Naomi Goldberg, Karen Goodman, Rikki George, Karen Johnson & Steven Craig Paxton, Anthony Ledesma, and Anita Paoe & Benjamin Weissman. Call LACE, 624-5650 for schedule. Tickets: \$8/\$6 LACE members.

OPEN STUDIO TOURS

May 14-15; Open Studio Tours
 More than 75 artists' studios open in the downtown area: Saturday, studios east of Alameda and Sunday, west of Alameda. Tickets and maps for visitors are on sale at LACE on the days of the event. Tickets: \$6/\$4 LACE members.

Woody Vasulka & Ed Emshwiller

May 24 - June 19; Woody Vasulka and Ed Emshwiller:

New Works, Opening: Tuesday, May 24, 7-10 pm, Artist

Presentation 8:00 pm These two masters of manipulated video images show their recently completed tapes, "Art of Memory" and "Hungers"

(in collaboration with Morton Subotnick), respectively.

RE:PLACEMENT

Continuing through April 17 RE:PLACEMENT : an exhibition critical of the systems which develop, present and preserve the arts. AND continuing through April 10: The Salon of Romantic Light: an installation in the LACE Bookstore.

FILMFORUM

LACE WELCOMES FILMFORUM WHICH WILL CONTINUE ITS REGULAR PROGRAMMING IN OUR PERFORMANCE SPACE. FOR FURTHER INFORMATION, CALL 276-7452