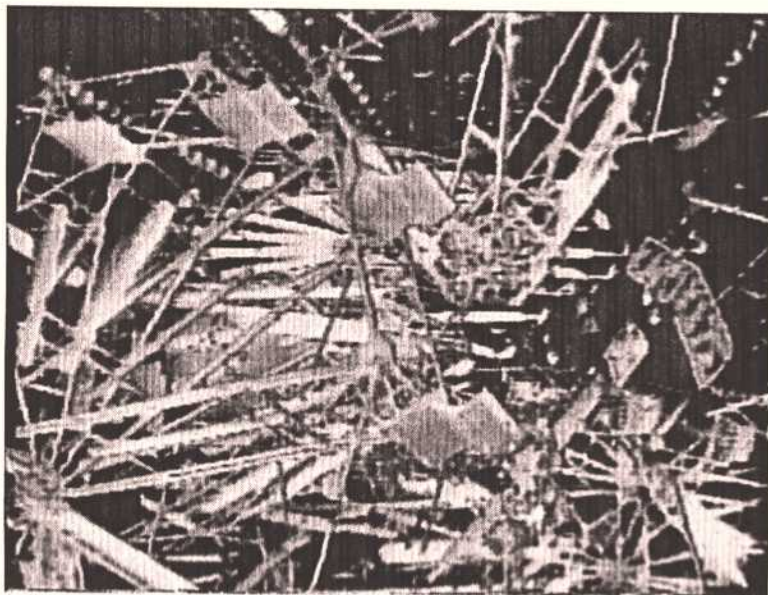


**New Music Circle and
The Saint Louis Art Museum
present**

New Music/Video

Four Videos and Improvisation



Tuesday, May 27, 1997

7:30 p.m.



The 38th Season -1996-97

Make Noise, Be Happy!

Bongos ▾ Congas ▾ Timbales
Djembes ▾ Talking Drums
Kalimbas ▾ Dumbeks ▾ Tablas
Bodhrans ▾ Rainsticks ▾ Guiros
Pandeiros ▾ Tambourines
Maracas ▾ Chimes ▾ Cowbells
Shakers ▾ Woodblocks ▾ Surdos
Cuicas ▾ Agogo Bells ▾ Fun



7241 Manchester Ave.
St. Louis, Missouri
644-0235

Duff's Now In Our 26th Season.

Before the Theatre or anytime.
392 North Euclid, in the Central West End.
For reservations, call 361-0522.

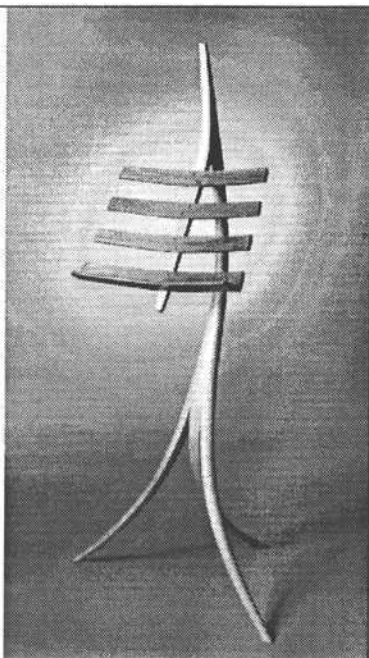
About New Music Circle

Founded in 1959, New Music Circle is the longest continuously operating presenter of contemporary and experimental music in the United States. NMC's programs include an annual concert series presenting musicians from St. Louis and around the world; special events, workshops and educational programs featuring visiting musicians; a series of monthly jam sessions providing performance and networking opportunities for area musicians and composers; and *New Music Circular*, a bi-monthly newsletter. NMC also co-produces *New Music St. Louis*, a radio show airing each Wednesday evening from 10 p.m. to midnight on KDHX, 88.1 FM.

New Music Circle is a not-for-profit corporation and is funded with assistance from the Missouri Arts Council, a state agency; the St. Louis Regional Arts Commission; the Mid-America Arts Alliance; and the Arts and Education Council of Greater St. Louis.

For more information, call the New Music Circle Hotline at (314) 995-4963 or send electronic mail to NMC_STL@aol.com.

EMBRACE THE ARTS



THE SAINT LOUIS ART MUSEUM

New Music Circle Board of Directors

Randy Titus, *President*
John Newman, *Treasurer*
Rich O'Donnell, *Musical Director*

Henry Claude
Alison Ferring
Gary Gronau
Anna Lum
George Sams
Fred Tompkins

James V. Curley
Carol Godwin Gaspar
Floyd LeFlore
Paul Neuenkirk
Tom Sutter
Jerry Troxell

Administrator: Dean C. Minderman

New Music Circle Members

Benefactors:

Mary T. Hall Nancy and Ken Kranzberg
Sherri Lyss & Michael Williams

Members:

Rebecca A. Browne	James V. Curley
John & Cindy Curley	Charlie Dent
Carol Gaspar	Margaret Gilleo
Gary Gronau	Eugene Guttin
Joy & Samuel Guze	John Harney
Brian Hasenstab	William R. & Patricia Kohn
Geraldine Limanni	Anna Lum
Lucia P. May	Dean C. Minderman
Paul Moon	Mike Murphy
Paul Neuenkirk & Ellen Irons	John Newman
Rich O'Donnell	Ken Palmer
William Julius Polk, Jr.	Hal & Violet Poth
Joshua Riggs	John Sebben
Kendall Stallings	Anne Taussig
Jean & Frederick Taussig	Randy Titus
Fred Tompkins	Odile Tompkins
Jerry Troxell	Roy Zurick

Searching for the latest in challenging contemporary sounds,
including electronic music, improvisation, intermedia,
free jazz, orchestral and chamber works and more?

Listen to **New Music St. Louis**
Now airing every Wednesday from 10 p.m. to Midnight on

FM 88.1 KDHX
ST. LOUIS COMMUNITY RADIO

Presented by New Music Circle, the Saint Louis Symphony
Orchestra's Discovery Series and Synchronia

IMAGITRAX
CASSETTES & COMPACT DISCS

PROFESSIONAL MASTERING HOUSE

BEST EARS
COOLEST TOYS
ONE-OFF CDs
"A BUCK A MINUTE"
(for the first one)

COPIES LESS
IMAGITRAX
284 EAST AVE.
ST. LOUIS, MO
(314) 963-0155

Forum for Contemporary Art

3540 Washington Avenue
just east of Grand
314/535-4660

April 4 through May 31
Carroll Dunham
Paintings and Drawing
and
Ken Little
Rose Amarillo

Hrs: Tues - Sat 10 am - 5 pm





New Music Circle and
the Saint Louis Art Museum present
New Music/Video

7:30 p.m., Tuesday, May 27, 1997
Saint Louis Art Museum Auditorium

The Musicians

- | | |
|----------------------|-----------------------------|
| Dave Glauber | guitar |
| Tory Starbuck | violin, guitar, synthesizer |
| Randy Titus | percussion |
| Fred Tompkins | flute |

The Videos

- | | |
|-----------------------------------|-----------------|
| <i>Transfinite Loops</i> | Van McElwee |
| <i>Ten Thousand Things</i> | Shalom Gorewitz |
| <i>Urban Episodes</i> | Steina Vasulka |
| <i>Inez</i> | Orestes Valdes |

Special Thanks

New Music Circle would like to thank all the video artists represented on tonight's program, especially Van McElwee, whose curatorial assistance and advice was invaluable; Dan Reich and the Saint Louis Art Museum for their continued support of new music; KDHX-FM for promotional assistance; and all the volunteers who helped make this event possible.

We would also like to extend a very special thanks to Ken and Nancy Kranzberg, whose generous financial assistance has helped make possible our 1996-97 concert series.

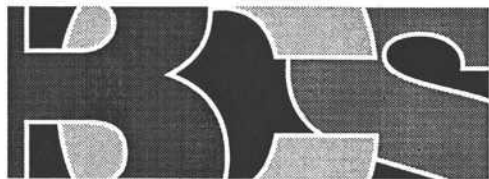
About The Video Artists

Van McElwee is an internationally known video artist who has been the recipient of many grants and awards. His work, which has been exhibited extensively worldwide, alters space and time as a way of shaping the viewer's awareness. The observer becomes the subject of the pieces as mind and medium remold the world of appearance. The result is an art form that occupies the boundary between architecture and music. McElwee currently teaches at Webster University in St. Louis.

Shalom Gorewitz is the 1989 recipient of a Guggenheim Fellowship and professor in the School of Contemporary Arts at Ramapo College in New Jersey. His work has been shown throughout the world, including galleries and festivals in the United States, Israel, Japan and Europe as well as on the USA cable network program *Night Flight*. Gorewitz brings a painterly, poetic aesthetic to his distinctive image processing techniques, using the electronic medium to create introspective visions and transforming recorded reality through an expressionistic manipulation of images and sounds.

Steina Vasulka is a legend in the world of video art. Born in Iceland, educated in Prague and currently a resident of Santa Fe, New Mexico, she has received numerous awards and has exhibited work internationally both as a solo artist and in collaboration with her husband Woody Vasulka. Her work explores intricate transformations of vision, space and sound through the dynamic confluence of digital technologies, mechanical devices and natural landscapes. To create *Urban Episodes*, Vasulka chose a public plaza in Minneapolis to place one of her *Machine Vision* devices, which includes mirrors and two cameras that pan, tilt and zoom.

Orestes Valdes is an Emmy award winning video artist who has been producing and exhibiting his work for 15 years. He utilizes a wide variety of innovative techniques and often shoots on film, bringing his vision as an accomplished photographer to his work in video. Valdes' video pieces have been shown widely throughout the United States. He is the producer of the St. Louis cable series *Mind Over Television* and teaches media at Webster University. His latest work *Inez* is receiving its world premiere during tonight's program.



BUSCH CREATIVE SERVICES

ONE OF THE ANHEUSER-BUSCH COMPANIES

WE SUPPORT
THE FINE ARTS OF
ST. LOUIS BECAUSE
THE FINE ARTS
OF ST. LOUIS
SUPPORT ALL OF US.

LIGHTING PICTURETEL
EXHIBITS/INSTALLATION
EQUIPMENT RENTAL
VIDEO/AUDIO/3D ANIMATION
PROMOTIONAL GRAPHICS
STAGING/TECHNICAL
MOBILE PAVILIONS

1.800.289.7897 ☐ FAX 314.289.7729



Budweiser



JOHN DEERE

